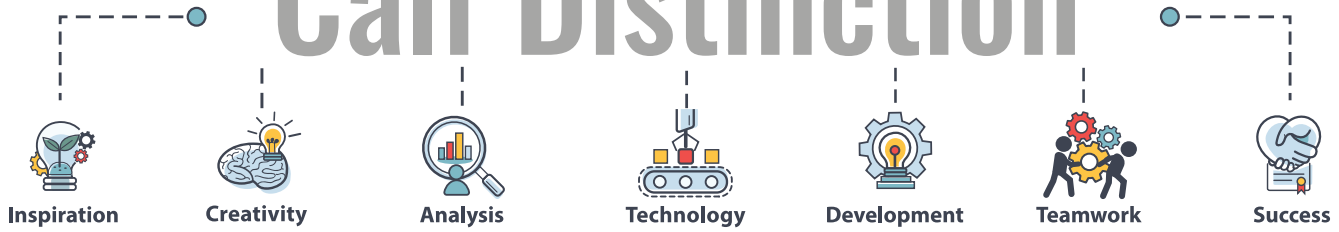
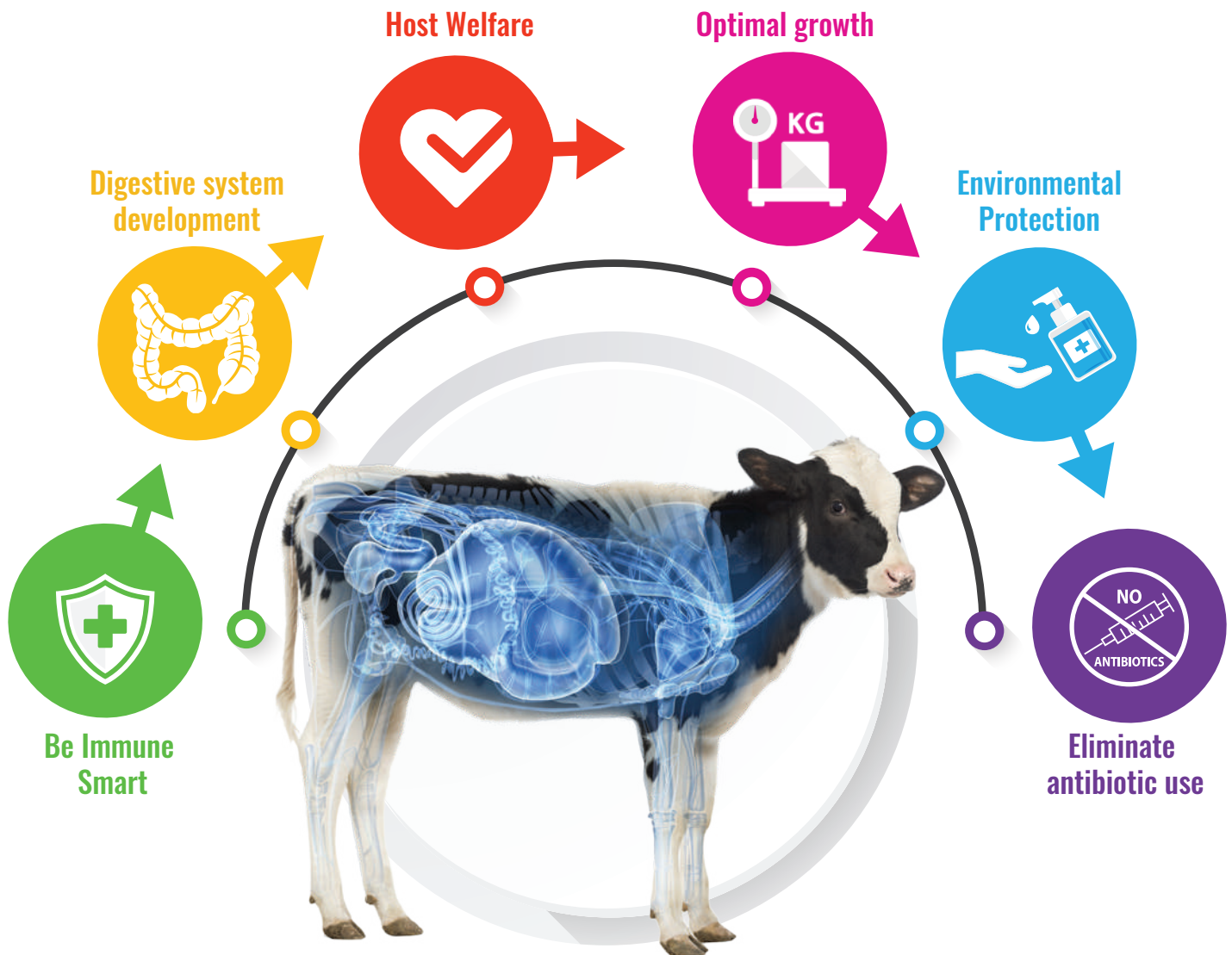




Calf Distinction



Excellence that sets someone or something apart from others.



Tomorrow starts today.



The story begins at birth

As a dairy producer you don't get a second chance with calf health.



STRATEGY

Colostrum-timing is key.

Calves must receive high-quality colostrum.

4-2-2 Protocol : 4 quarts/liters at birth.
2 quarts/liters 6 hours after birth.
2 quarts/liters 12 hours after birth.



GutVersity

Prebiotics, diverse strains of probiotics and postbiotics.

When calves are young the goal is to feed the gastrointestinal tract.



Egg Proteins

Targets pathogenic organisms.

An increase in bacterial burden leads to an increase in intestinal permeability, bacterial translocation and absorption of endotoxins.



TEAMWORK

Work with a herd veterinarian to develop a herd vaccination protocol to enhance colostrum quality for both mature cows and heifers.



Support Immune Health

IPS (Immune Positioning System)

A unique blend of biologically active polysaccharides and polypeptides. IPS provides unmatched immune support for your calves.



CREATIVE

CALFHack: The best practice is to **thaw** frozen colostrum in a warm water bath of 122 F (50 C). A sous vide machine uses a heated metal coil to warm water to a constant temperature, never fluctuating to high or low extremes. The water never comes to a boil.

Calves fed colostrum for four days will be more efficient animals, growing faster and potentially making more milk per lactation over their lifetime.



Sync must be fed in first 24 hours

Sync is Available in Bolus, Paste and Powder.

Good colostrum, low mortality

Neonatal gut health

Calf diarrhea and lung disease are the most common causes of death in young calves. Early identification and treatment increases survival rates.



TEAMWORK

The team working with calves should watch to see if calves get up when they see a member of the team. At feeding times all calves should be up and ready to eat.

Zinc Methionine
Research shows support for lung health.



Bioactive Polysaccharides
Prime and balance the Immune System.



STRATEGY

Do you smell ammonia or fresh scours - find the pen with the issue. Listen to your calves breathing - is there any labored/raspy breathing or coughing?

Bacillus Strains
Support compromised intestinal barrier.



Yeast Culture
Feeding Yeast Culture reduces health disorders.



Yeast Components, Prebiotics and Postbiotics
Feed the gastrointestinal tract.



Egg Protein
Targets pathogenic organisms.



Phytogenics
Anti-inflammatory properties.



Yucca
Yucca schidigera soothes the intestinal tissue, reducing inflammation.



CREATIVE

CALFHack: Identify the four D's of scours and how to treat them - Diarrhea-Dehydration-Depression-Death

Antibiotic treatment for clinical sickness during the pre-weaning phase resulted in 493 kg less milk during the first lactation compared to herd-mates that received no antibiotics.

Surveillance Calf is available in 22.2 lb Jugs, 450 lb Drums and 2750 lb Totes.

Feed the Future

Powered Hydration



TEAMWORK

Geof Smith says "There is no proven benefit to withholding milk and this strategy will only exacerbate further the animal's state of negative energy balance."



STRATEGY

Product formulation makes a difference. Choose one that fulfills the essential requirements for scouring calves.



CREATIVE

CALFHack: Continue to offer milk. 1 bottle electrolyte to calves with diarrhea. 2 bottle's electrolyte to calves with moderate dehydration. 3 bottle's electrolyte to calves with severe dehydration.



Bioactive Polysaccharides

Prime and balance the Immune System. **Immu-Lyte** supports a healthy gastrointestinal Microbiome.



Treat Dehydration

Water is the essential ingredient in a rehydrating solution. Regardless of the cause of diarrhea, calves die because of dehydration and the subsequent problems it causes.



Palatable Electrolyte

Immu-Lyte corrects dehydration, acid-base and electrolyte abnormalities. Immu-Lyte is highly palatable and encourages the calf to drink free-choice.



Fuel from a better Source

Immu-Lyte contains multiple energy sources. Calves that don't receive enough energy when scouring will begin to break down muscle protein.



SmartBlock Disinfectant

Sanitation for calf scours prevention.

1. Prioritize Sanitation.
2. Address pathogens embedded in Biofilm using low pressure foaming.
3. Find and address trouble spots with an ATP meter.
4. "Chlorine Dioxide is the most effective disinfectant for C. Parvum" says Donald Sockett, DVM, MS, PhD, ACVIM at the Wisconsin Veterinary Diagnostic lab.

Livestock Application of SmartBlock.

- Drinking Water** - using residual concentrations of 0.5-0.8 ppm.
- Sanitizing calf feeding equipment** - 50 ppm for 2 minutes.
- Misting when livestock present** - 100 ppm for 30 seconds.
- Environmental disinfecting with no livestock present** - 250 ppm for 10 minutes.
- Environmental fogging with no livestock present** - 500 ppm for 30 minutes



Control the variables

Calf Health Breakthrough



Sync Paste

Supports the Immune System's Front line Defenses.
Provides broad spectrum support for chronic conditions.
Contains MicroBasics blend of Bioactive Polysaccharides-I.P.S.
GutVersity: diverse strains of probiotics, ensuring 10 billion cfu/serving.



G-Tract Calf Why Paste

Targeted Egg Proteins derived from hens that have been strategically vaccinated .
Organisms that normally attach to the gut wall can be blocked by antibodies.
Provides support against digestive upsets.



G-Tract Calf Pro Paste

Science has revealed that her gut may be the motherboard for her entire body.
G-Tract Pro contains prebiotics, postbiotics and Immune co-factors which support the intestinal flora during antibiotic treatment, transport and exposure to pathogens.
GutVersity: diverse strains of probiotics, ensuring 50 billion cfu/serving.



Surveillance Paste

Provides immune support and promotes intestinal health.
Contains a combination of ingredients to support GI health.
Provides broad spectrum support for chronic conditions.
Provides support against digestive upsets.



Calf Jolt Paste

Enhances calf vigor and gives calves a boost of energy.
Is very quickly and efficiently absorbed.
Naturally increases body temperatures and respiration rates in newborn calves.



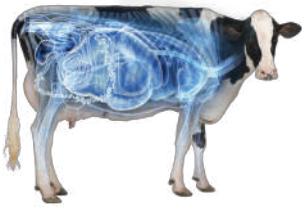
CryptoMune Paste

Cryptosporidiosis is a common cause of Diarrhea in Calves.
Organisms damage the villi which line the small intestine.
Focus on fluid therapy to keep calves hydrated.

Observation is essential

Calf Distinction Timeline

The path to health



At Birth

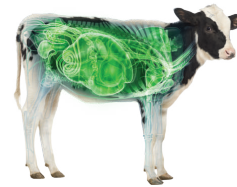
These provide optimal ingredient combinations and potency when overwhelming numbers of pathogens in maternal colostrum threaten calf health and survival.

Achieve

Close-up and Fresh Cow Care:

Feeding ACHIEVE during this time can increase milk production and ensure healthy calves and cows.

Sync and NasaMune

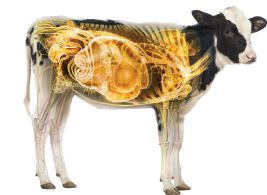


Milk Period

This is a next generation product for the natural and healthy feeding of calves. Surveillance Calf offers our customers a solution to many of the health challenges faced in raising calves.

Surveillance Calf

Immu-Lyte



Scouring calves

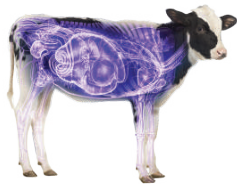
Calves may lose 10 percent of their body weight in a single day. Dehydration, not microorganisms, typically kills these calves. Early identification and treatment of dehydrated calves increase survival rates.



Assimilate

Liquid feeds

These provide most of the nutrients for young calves. Feeding rates and feed quality influence the growth and health of calves. Use only good-quality feeds and follow mixing and feeding directions for milk replacers carefully. Check temperature of milk at first and last calf fed.



SmartBlock

CLEANING AND SANITATION:

Young calves are highly susceptible to infection and disease. Limiting their exposure to dirty equipment and housing can prevent illnesses. Keep buckets, nipple bottles, health equipment, calf housing, and maternity pens clean and sanitized to maintain the health of dairy calves.



Surveillance in Calf Starter.

DRY FEED AND WEANING:

Intake of dry grain stimulates rumen development in the calf, which is very important for the calf's overall digestive system and growth. Offer calves a dry grain mix within a few days of birth. During the first week of life, they will eat very little grain, but by the second week they should be eating noticeable amounts. Calves should be eating 1.5 to 2 pounds of grain per day by the time they are weaned.

