



**ROUGH ON  
DISEASE.  
SMOOTH ON  
CATTLE.**

**BIO-MYCIN<sup>®</sup> 200**  
*(oxytetracycline injection)*

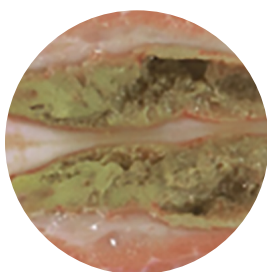
**SMOOTHER  
IS SMARTER.**

# Choose the only oxytet injection that's rough on disease — not on cattle.

Bio-Mycin® 200 (oxytetracycline injection) is the only injectable product formulated with Select Carrier™ to deliver oxytetracycline to the bloodstream and minimize costly injection-site lesions. That translates into being easier on your animals — and your wallet.

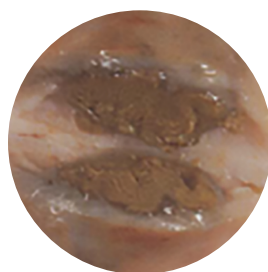
## See the smooth difference.

In a head-to-head study, BIO-MYCIN 200 showed reduced tissue damage in cattle after injection when compared to Nuflor® (florfenicol), Micotil® (tilmicosin), Liquamycin® LA-200® (oxytetracycline injectable solution) (Sub-Q) or Noromycin® 300 LA (oxytetracycline).<sup>1</sup>



**Noromycin® 300 LA**

Injection site reaction is moderate to severe and unresolved or still active.



**Liquamycin® LA-200® or generics**

Injection site reaction is mild to moderate.

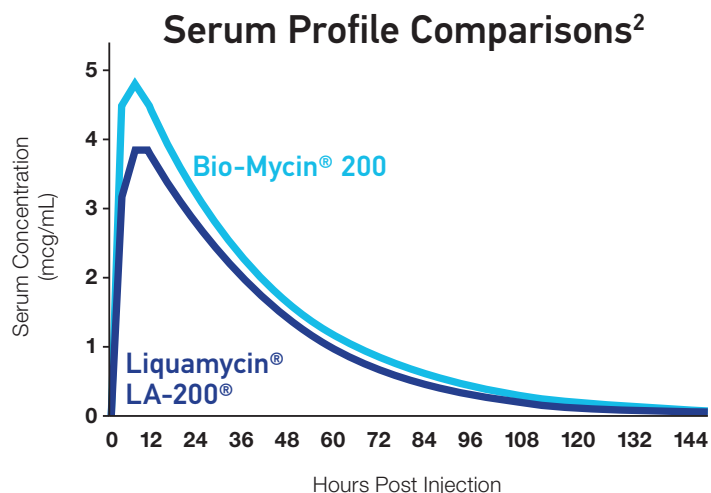


**Bio-Mycin® 200**

Injection site reaction has resolved.

## Smooth and effective.

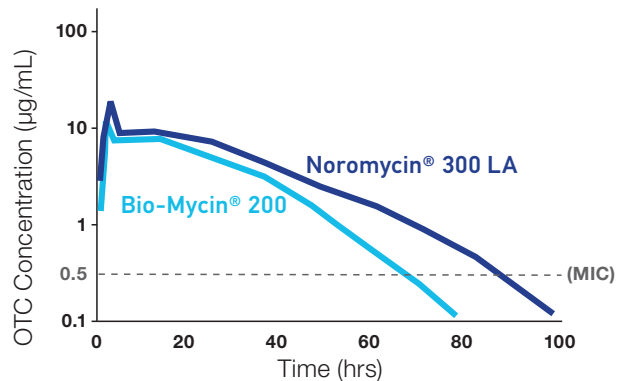
Compared to competitors, BIO-MYCIN 200 has higher peaks and longer duration of antibiotic levels in tissue.



## How do we compare to Noromycin® 300?

BIO-MYCIN 200 is the smooth alternative to Noromycin® 300, and with time above minimum inhibitory concentrations (MICs) only showing an 18-hour difference, BIO-MYCIN 200 becomes an easy choice.

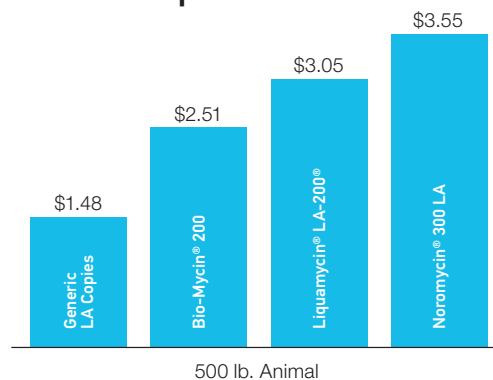
### Oxytetracycline Concentrations<sup>1</sup> (Mean)



## More value. More economical.

Losses due to lesion trimming can cost up to \$40 per head.<sup>3</sup> So choosing the smoother BIO-MYCIN 200 instead of a cheaper long-acting oxytetracycline can save you money over time.

### Cost per Treatment\*



\*Cost of treatments calculated using producer pricing from online producer catalogs.

## Get the BIO-MYCIN 200 advantage:

- Unique Select Carrier™ is smooth in tissue for improved cattle comfort
- Higher blood levels than other 200 mg oxytetracyclines<sup>2</sup>
- Provides fast-and long-acting oxytetracycline blood levels<sup>1</sup>
- Treats a range of diseases including pinkeye, bovine respiratory disease, foot rot and leptospirosis
- Sub-Q delivery and Beef Quality Assurance (BQA) compliant
- Approved for lactating and non-lactating dairy cows and all beef cattle
- Excellent cost/benefit value when factoring in potential hidden costs (such as tissue damage and public perception) compared to competitive products<sup>1</sup>



**BIO-MYCIN IMPORTANT SAFETY INFORMATION:** When administered to cattle, muscle discoloration may necessitate trimming of the injection site(s) and surrounding tissues during the dressing procedure. Discontinue treatment at least 28 days prior to slaughter. Milk taken from animals during treatment and for 96 hours after the last treatment must not be used for food. Rapid intravenous administration may result in animal collapse. Product should be administered intravenously slowly over a period of at least 5 minutes. Exceeding labeled dose or more than 10mL per site may result in antibiotic residues beyond the withdrawal period. Reported adverse reactions may be attributed to anaphylaxis or to cardiovascular collapse of unknown cause.



# Smooth Effective Economical

<sup>1</sup> Dowling PM. Evaluation of subcutaneous and intramuscular injection sites of antimicrobials in calves. Western College of Veterinary Medicine, University of Saskatchewan, Saskatoon, SK. 1998;1–40.

<sup>2</sup> Lechtenberg K and Apley M. Pharmacokinetics for Bio-Mycin® 200 (oxytetracycline injection) vs. Liqueamycin® LA-200® (oxytetracycline injection) Serum Profiles following Sub-Q Administration. Technical Bulletin, Oakland, Neb.: Boehringer Ingelheim Animal Health USA Inc., 2019:1–2.

<sup>3</sup> Beef Quality Assurance Injection Sites and Techniques, W. Mark Hilton, DVM, March 2006. Purdue University.