

MORE BLOCKS FOR YOUR BUCK. 30% MORE.

The new 210cc cartridge comes in an industry standard cartridge and holds 30% more material than prior models, giving you more material for your money.

FEATURES

- Larger dispensing ports
- Locking collar holding tip in place
- After use airtight capping mechanism
- Durable tube design
- Interchangeable with all 200cc dispensers
- 210cc volume

BENEFITS

- No cutting tips or clogged ports
- Collar locks tip in place and prevents back flow
- Airtight cap extends into tube and ensures equal flow of both parts
- Tube design and larger openings prevent back pressure that can break seams
- More volume per tube



SAME CHEMISTRY
BETTER CARTRIDGE

Contact us for more information
info@vettec.com | US Customer Care 1.800.483.8832
EU Customer Care +00800-3032-3032
www.vettec.com

Vettec
ANIMAL HEALTH

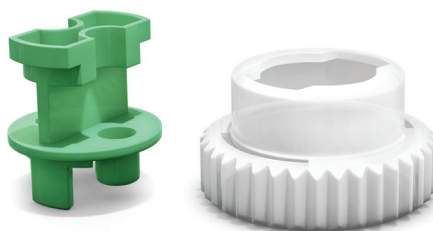
USING VETTEC 210CC DISPENSING SYSTEM

1



Load cartridge into dispensing gun

Unscrew locking collar and remove green plug, place aside for future use.



2

3

Equalize cartridge

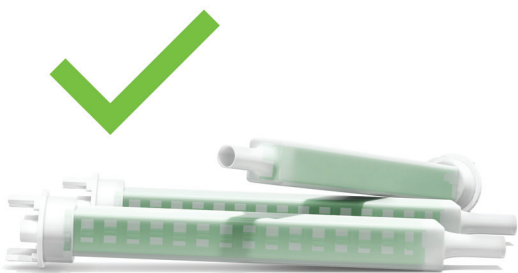
Attach mix tip and screw locking collar back on to secure. (After use, remove locking collar and mix tip. Insert green plug and screw locking collar back in place to preserve remaining material).



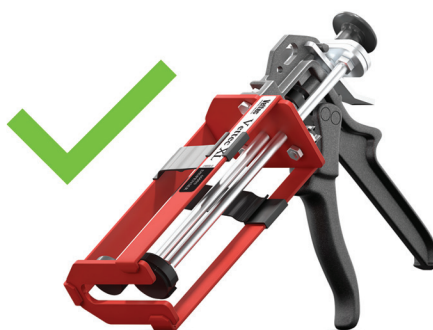
4



Note: Utilize 210cc Mix Tips and Dispensing Guns only.



46900 - 210cc XL Mix Tip (10 count)
46905 - 210cc XL Mix Tip (25 count)



46903 - 210cc XL Dispensing Gun

Vettec
ANIMAL HEALTH

Contact us for more information
info@vettec.com | US Customer Care 1.800.483.8832
EU Customer Care +00800-3032-3032
www.vettec.com